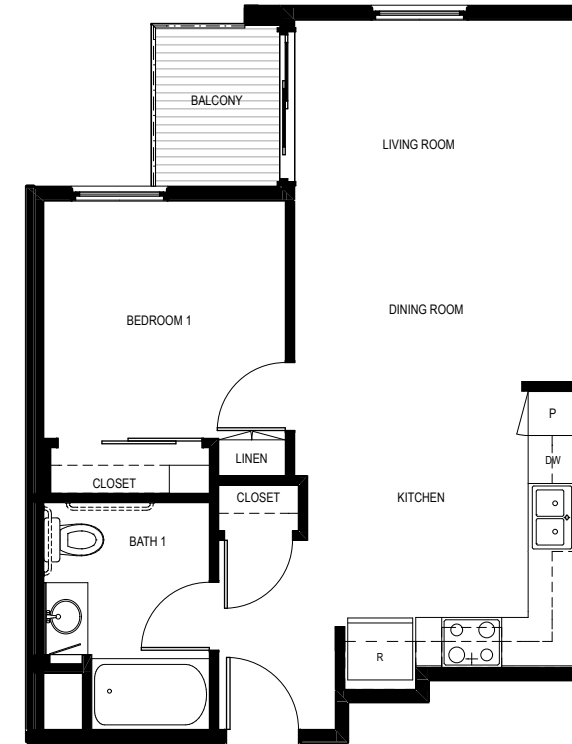


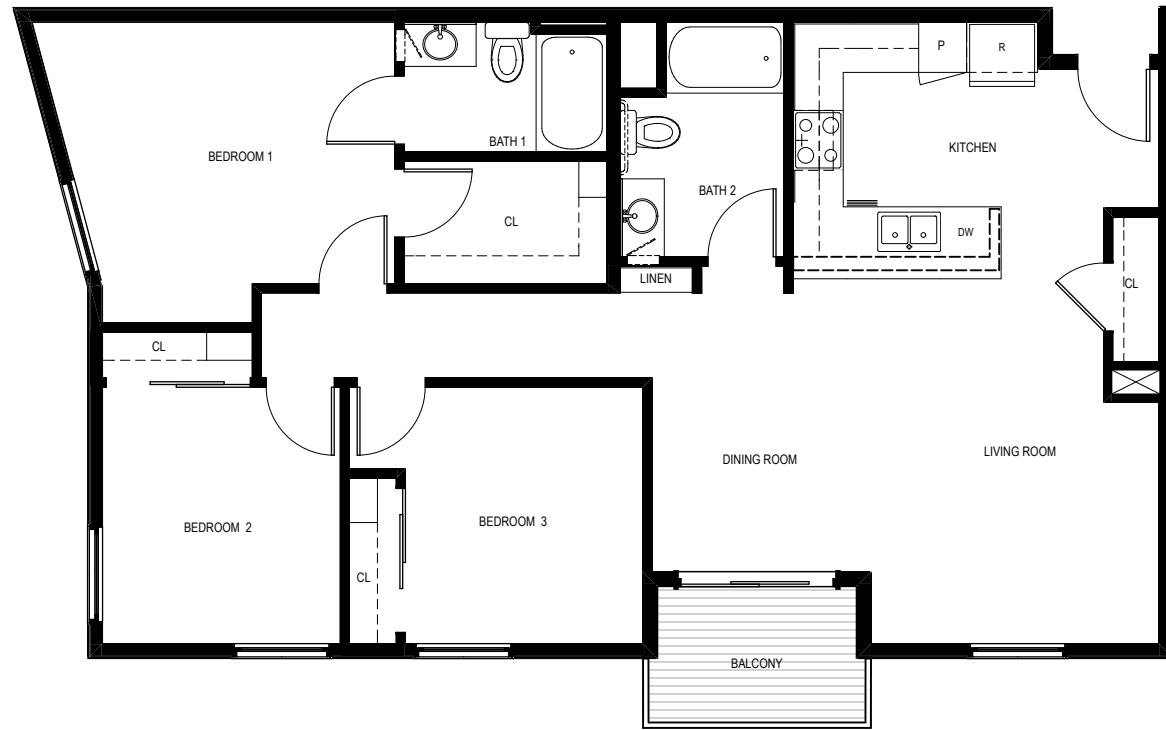
UNIT 2A (2 BEDROOM)
APPROXIMATELY - 894 SQ. FT



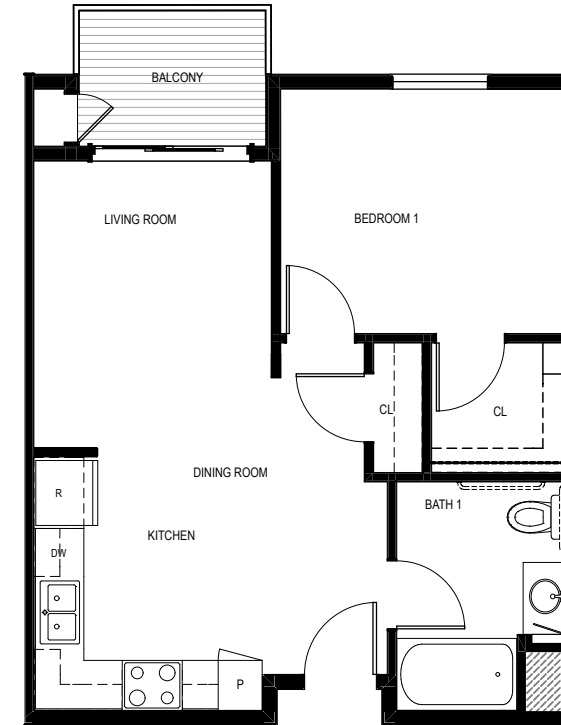
UNIT 1A (1 BEDROOM)
APPROXIMATELY - 603 SQ. FT

WEST GATEWAY PLACE APARTMENTS UNIT PLANS
77-UNIT AFFORDABLE HOUSING APARTMENT BUILDINGS

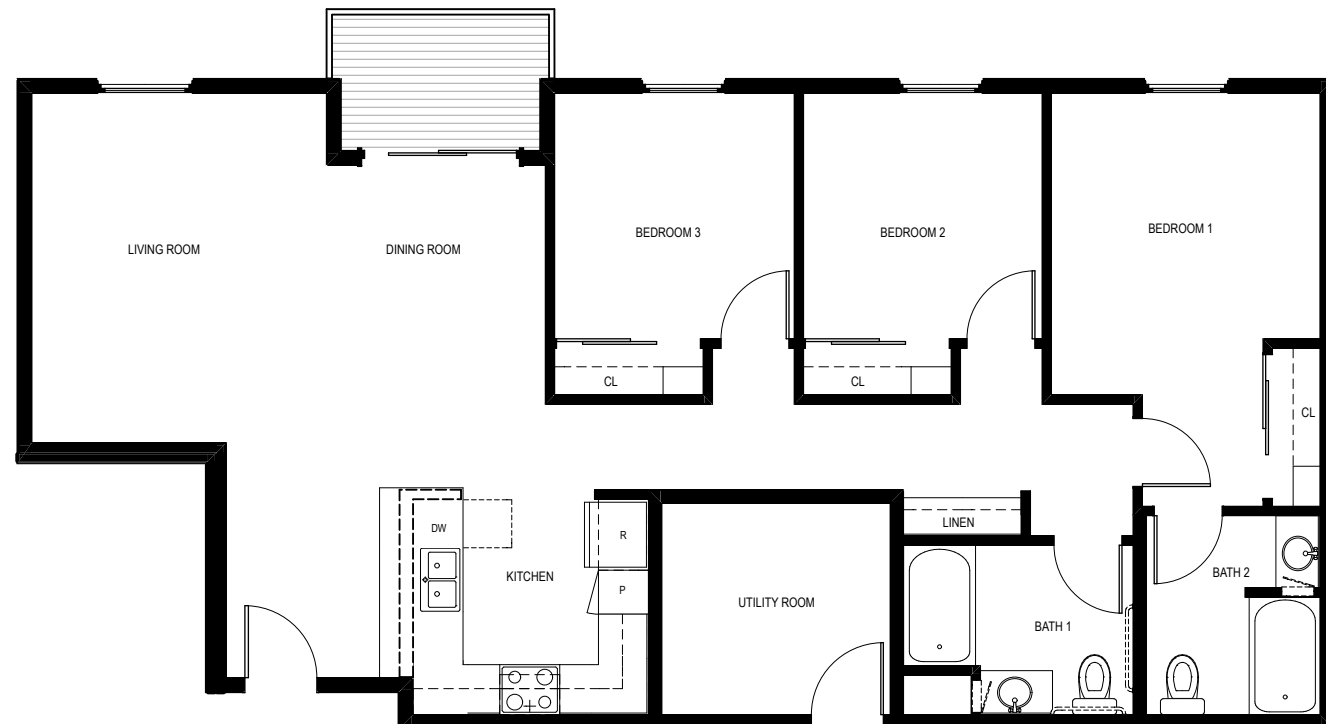
WEST SACRAMENTO, CALIFORNIA



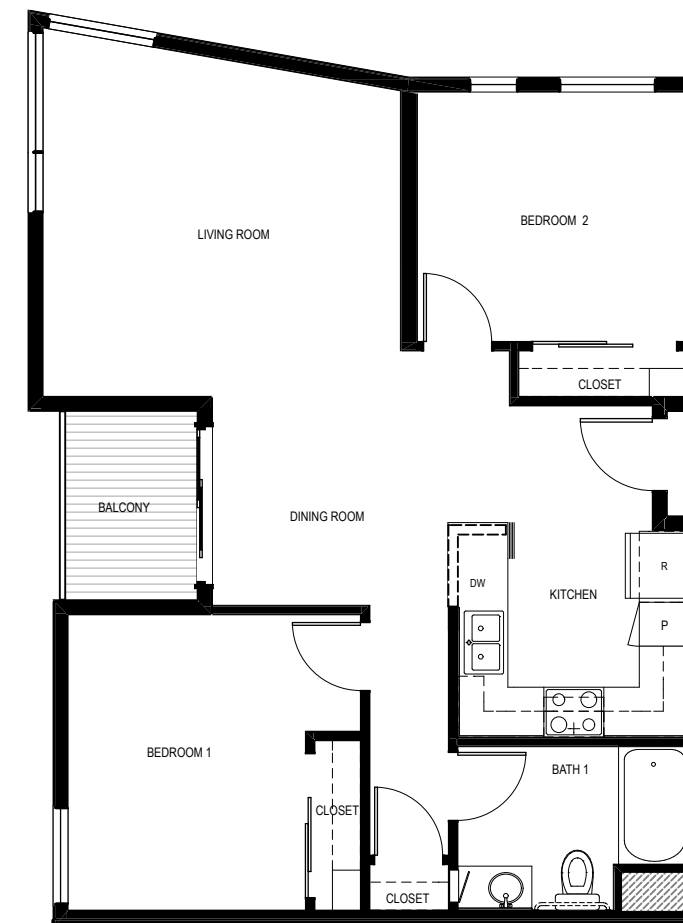
UNIT 4A (3 BEDROOM)
APPROXIMATELY - 1195 SQ. FT



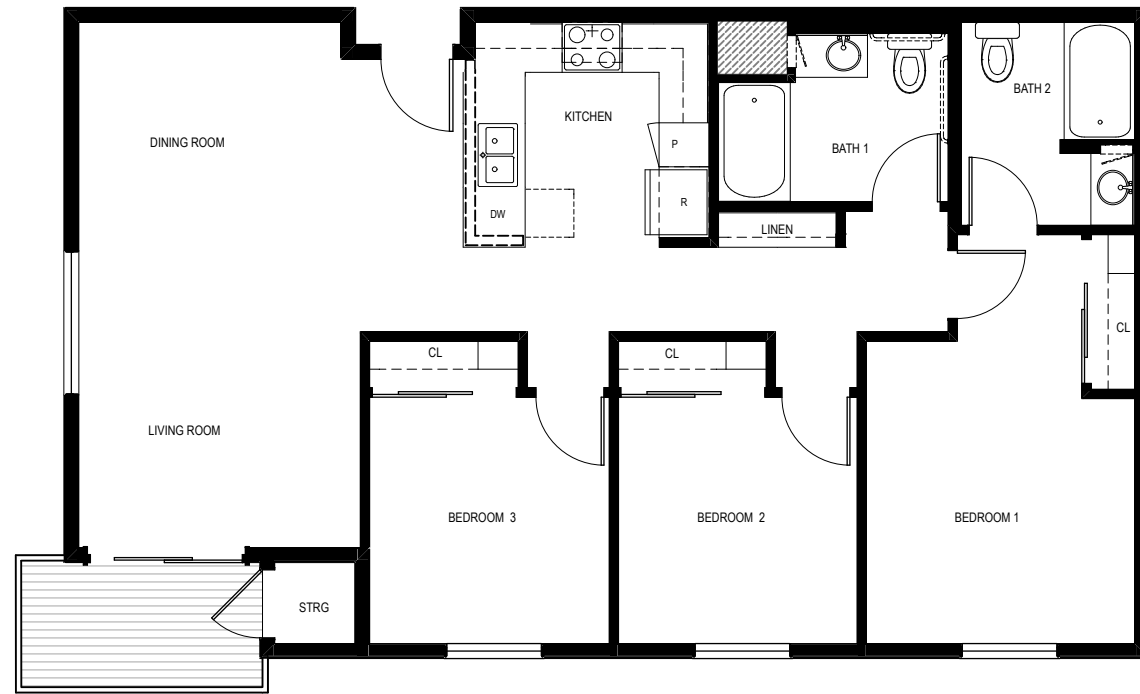
UNIT 1B (1 BEDROOM)
APPROXIMATELY - 588 SQ. FT



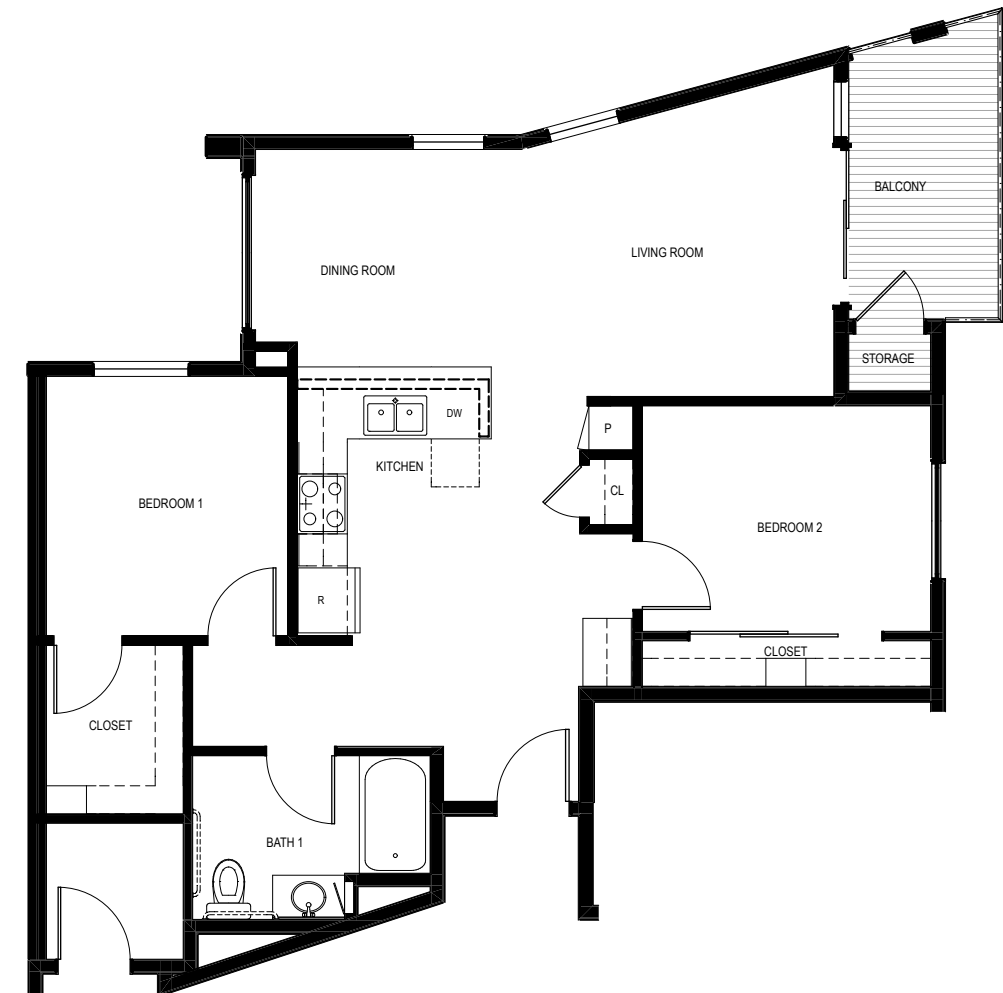
UNIT 2D (3 BEDROOM)
APPROXIMATELY - 1254 SQ. FT



UNIT 2B (2 BEDROOM)
APPROXIMATELY - 924 SQ. FT



UNIT 3A (3 BEDROOM)
APPROXIMATELY - 1173 SQ. FT



UNIT 2C (2 BEDROOM)
APPROXIMATELY - 956 SQ. FT